



# 巴斯德讲坛-精英讲坛系列 Pasteur Colloquium-Elite

## Bat Ecology, Physiology and Ecosystem Health



### Alice Catherine Hughes, Ph.D

*Principal Investigator, Landscape Ecology Group & Associate Professor, Centre for Integrative Conservation, Xishuangbanna Tropical Botanical Garden, Chinese Academy of Sciences*

Professor Hughes received her Ph.D in Ecology in 2011 from Bristol University, UK, and previously held positions in Thailand, Australia, Costa Rica, and the UK before moving to China. Her work focuses on patterns of biodiversity and drivers of biodiversity change at various spatiotemporal scales, in order to develop pro-active management strategies that aim to mitigate the impacts of human activities on biodiversity. Her research spans from biogeographic research to conservation prioritization and management, and the development of tools for conservation biodiversity monitoring and assessment. This work includes understanding patterns of diversity, including that of cryptic species, and the processes behind the divergence and biogeography of species based on a combination of approaches. Her work also includes developing new tools for monitoring biodiversity patterns for bats, such as the use of bioacoustics, and other site based prioritization techniques.

**A201, Life Science Research Building**

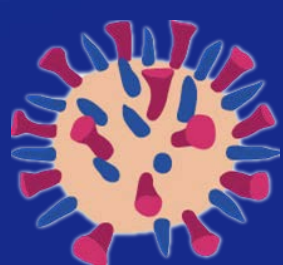
**1:00 PM - 3:00 PM**

**July 8<sup>th</sup>, 2020**

**Host: Gary Wong**

**腾讯会议直播间 (Tencent Meeting teleconference room):**

**413 795 932**



CAS KEY LABORATORY OF MOLECULAR  
VIROLOGY & IMMUNOLOGY  
中国科学院分子病毒与免疫重点实验室



中国科学院上海巴斯德研究所  
Institut Pasteur of Shanghai  
Chinese Academy of Sciences

